



Ardulink is a Java Open Source project. Please visit www.ardulink.org for more information.

Ardulink depends on some Java libraries and native code.

This is a detailed list:

Serial Connection

Serial Connection is the main connection method to Arduino boards. Ardulink SerialConnection uses serial RXTX library.

RXTX library site is <http://rxtx.qbang.org>

RXTX native code for windows systems (rxtxSerial.dll) is already in Ardulink distribution package. You can install RXTX for other systems reading instructions on RXTX site.

For linux systems you could use this command:

```
sudo apt-get install librxtx-java
```

USB Connection

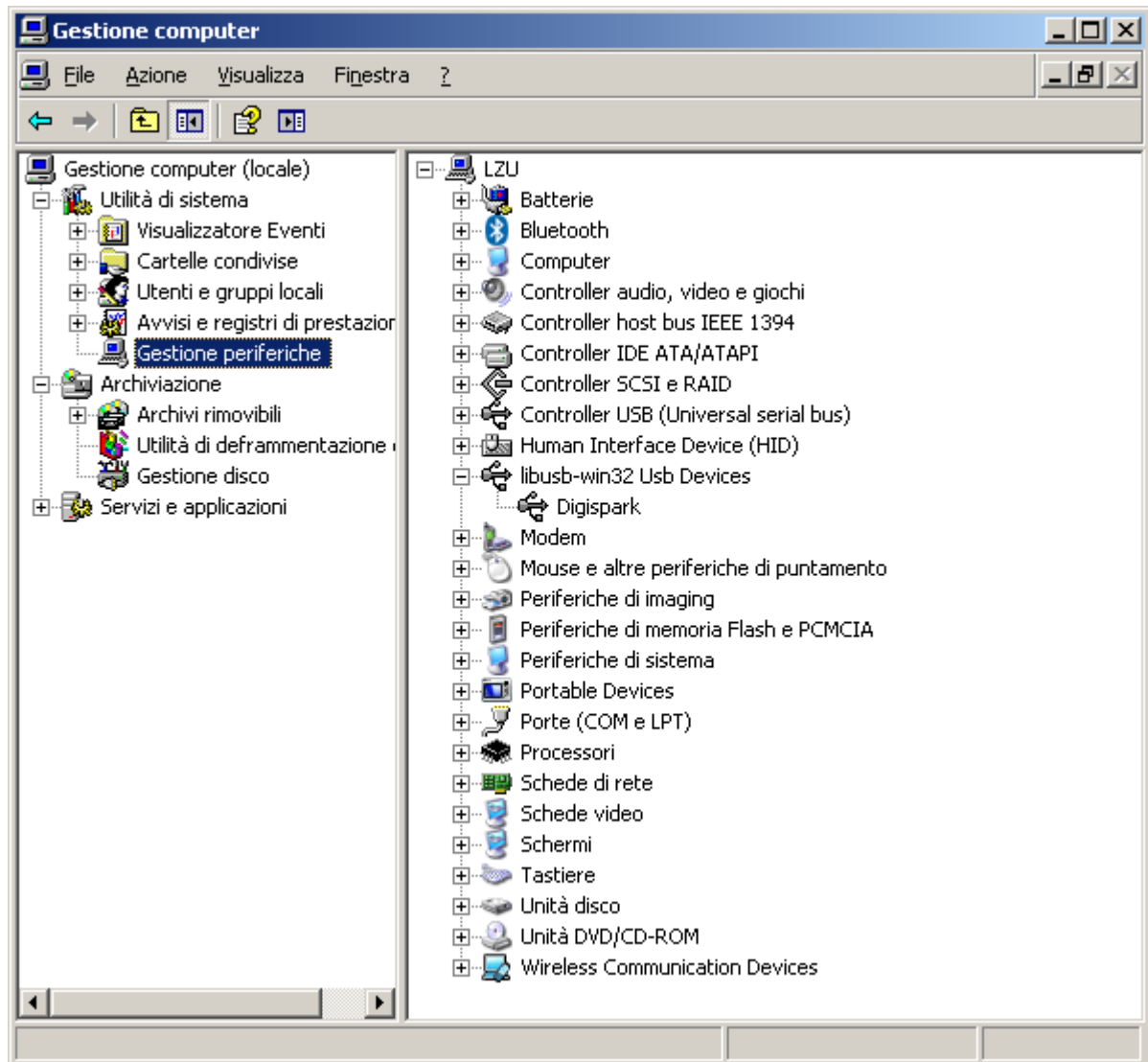
USB connection is intended for Arduino boards that don't have serial connection feature on USB. Actually Ardulink uses this connection for Digispark board (www.digistump.com) and PicoDuino board (www.tindie.com/products/bobricius/picoduino).

Ardulink USB Connection uses Java libusb / libusb-win32 wrapper (<http://libusbjava.sourceforge.net/wp/>). This java library is a wrapper for libusb (0.1) (<http://www.libusb.org/>) and libusb-win32 (<http://libusb-win32.sourceforge.net/>) USB library.

Please check each library's site to install instructions.
For windows systems you should:

- extract libusb-win32-bin-1.2.6.0.zip
- run inf-wizard.exe
- select Arduino board and finish the wizard

- install USB device using .inf file created



Picture 1: Device Digispark created

Compatibility list

Ardulink is generic and should work with almost any Arduino boards and Arduino clone boards. However, I have tested Ardulink only with some versions of Arduino or Arduino clones.

Actually I tested, in chronological order, Ardulink with:

| Board | Site | Ardulink Connection class | Ardulink GUI panel |
|-------------|--|---------------------------|-----------------------|
| Arduino UNO | www.arduino.cc | SerialConnection | SerialConnectionPanel |
| Digispark | digistump.com | DigisparkUSBCon | DigisparkConnecti |

| | | | |
|---------------|--|------------------------|--------------------------|
| | | nection | onPanel |
| Arduino Micro | www.arduino.cc | SerialConnection | SerialConnectionPanel |
| Zigduino r2 | logos-electro.com | SerialConnection | SerialConnectionPanel |
| PicoDuino | On tindie | DigisparkUSBConnection | DigisparkConnectionPanel |
| ChipKIT Uno32 | chipkit.net | SerialConnection | SerialConnectionPanel |